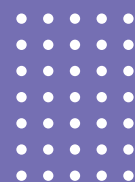


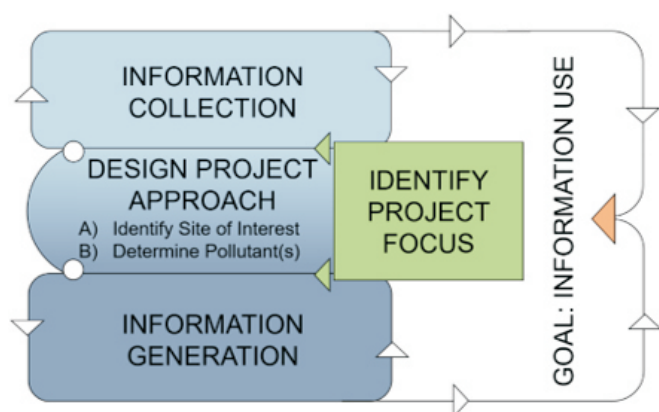
# Bilateral Relations and Economic Development Through Its Programs - Individualize Professional Accompagnement - Democratic Education Methods & On-Site Learning



## EVALUATION of student's SUCCESS



## ANALYSIS of student's EDUCATIONAL PROFILE COMPETENCES

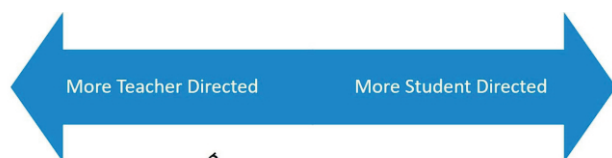


### Graphic Legend :

After identifying your project's focus, or the environmental problem to which you project will be directed, your first step will be designing your project's approach. This approach should be driven by the project focus that you have identified.

## Identifying professional project SECTORS /DOMAINS

**IDENTIFICATION OF APPROPRIATE COURSE CUSTOMIZE THE COURSE structure and modules to achieve student's professional goals / projects. ORGANIZING PREINTEGRATION PROGRAM**



Lecture--Showing/Telling  
Worked Examples  
Interactive Lecture  
Flipped Classroom  
Socratic Questioning  
Discussion-based  
Scenario-based  
Case-based  
Collaborative Learning  
Inquiry-based  
Problem-based  
Project-based

<Exposition

<Inquisition>

Generation>

\* Teaching methods are chosen to accomplish specific objectives. Methods are not universally more or less effective; they are more or less appropriate for the learning objectives, the student needs, and different learning environments or modalities.

# Bilateral Relations and Economic Development Through Its Programs - Individualize Professional Accompagnement - Democratic Education Methods & On-Site Learning



Setting up road map to  
**REACH BUSINESS PLAN**  
**MARKETING &**  
PR / BUSINESS CONTACTS  
**Data collection and**  
information sources



**Strategies to reach the**  
**FINANCIAL PLAN AND SET-UP FIGURES.**  
**THE BLUE PRINT**  
Viable / Faisable Business Plan

**BECOME**  
Key person to  
your potential  
**EMPLOYER**



**INNOVATIVE**  
**ENTREPRENEUR**